

10421us Updating ActivExpression devices to enable 'Self Paced Learning'

Please read all the information below before upgrading.

- This upgrade only applies if you wish to use ActivExpression devices with ActivInspire.
- **ActivPrimary and ActivStudio users should not upgrade.**
- You must upgrade your ActivHub to use ActivExpression devices with ActivInspire V 1.2
- You must upgrade both your ActivHub and your ActivExpression devices to use Self Paced Learning on ActivInspire V 1.2

If you have any concerns please contact Customer Support via www.prometheankb.com

Upgrade Procedure.

Before you upgrade, please check which version you are currently running.

What firmware and Driver version do I have?

Upgrading to the next generation

Self-Paced Learning delivers real-time, immediate response details for every student, question by question, enabling teachers to identify individual needs and address them. Simply create a question set, and 'send' it to each ActivExpression. Allow students to progress at their own speed and level. Assess performance with a clever, colour-coded teacher screen displaying results in an easy, comprehensive manner.

Follow the instructions below to upgrade

Ignore this section if you are using ActiVote devices.

ActivInspire 1.2 provides revolutionary new functionality for interactive learning with ActivExpression devices. This is supported by major enhancements to the ActivDriver and Promethean firmware. These are available from the Promethean Planet website.

This section describes how to:

- Check the ActivDriver, ActivHub and ActivExpression versions.
- Download the upgrade files from Promethean Planet.
- Upgrade all of the above.



The upgrade process is in three stages. You *must* complete each stage as shown and in the order described.
Failure to do so will damage your ActivExpression devices.


Before you begin


First you need to check which versions you are currently using.

Check 1 - ActivDriver version

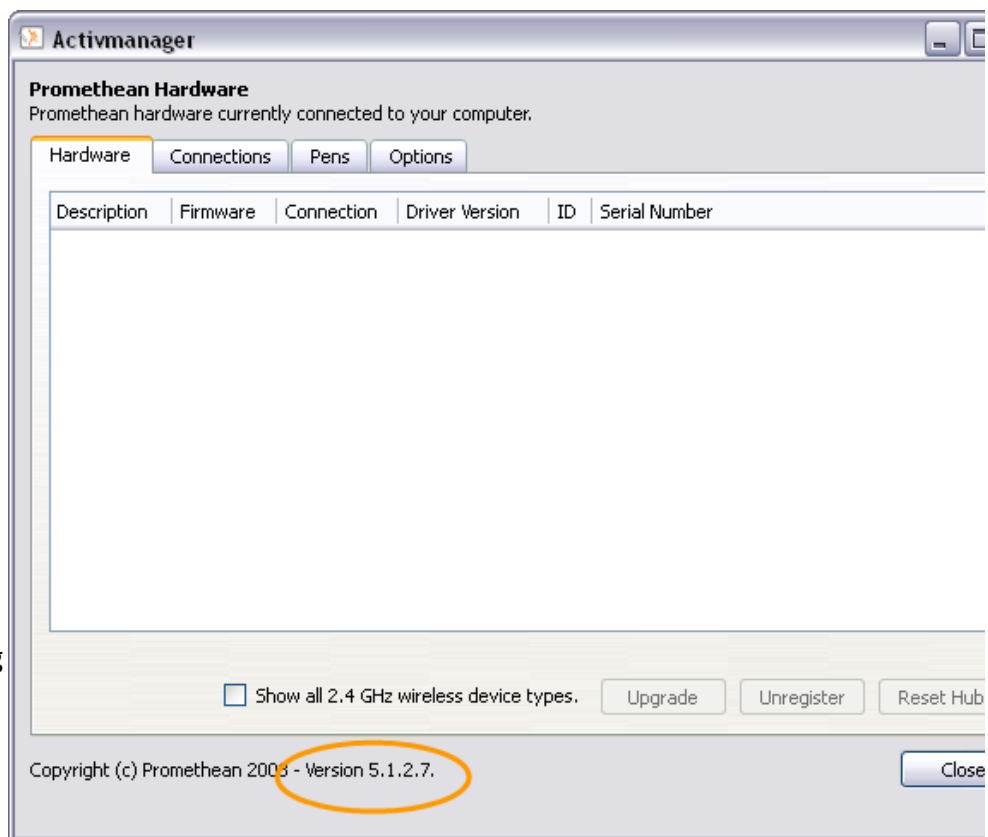
You need to upgrade the ActivDriver on your computer, if its version number is lower than the following:

- Windows – 5.1.2.7
- Mac – 5.2.7
- Linux – 5.2.7
- Right-click on the **ActivManager** icon in the bottom right-hand corner of the screen and select **Control Panel**. ActivManager opens.

 **ActivManager** icon when a device such as an ActivHub or ActivBoard has been detected.

 **ActivManager** icon when no device has been detected.

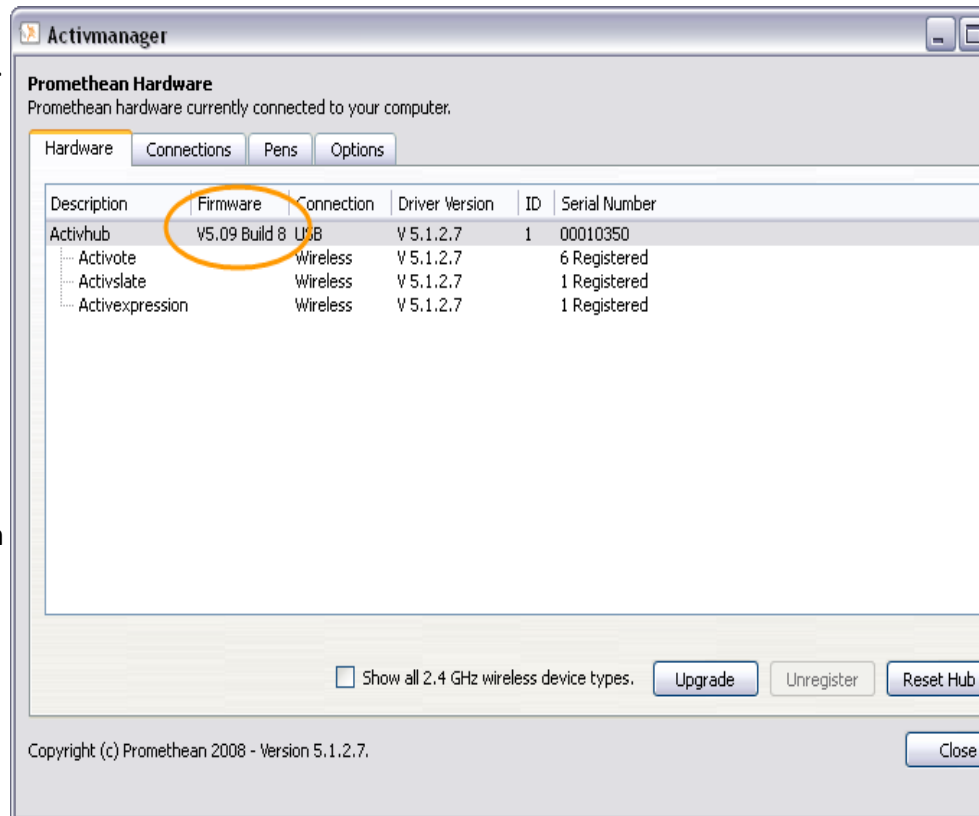
- Open the 'Hardware Tab' of the ActivManager.
- Check if the number of the 'Driver Version' is lower than the number for your operating system above.





Check 2 - ActivHub firmware version

You need to upgrade the ActivHub, if its version number is lower than V5.10 build 2.

- Plug in the ActivHub.
- Open the 'Hardware' Tab of the ActivManager.
- Check if the number in the 'Firmware' column is lower than the number above.



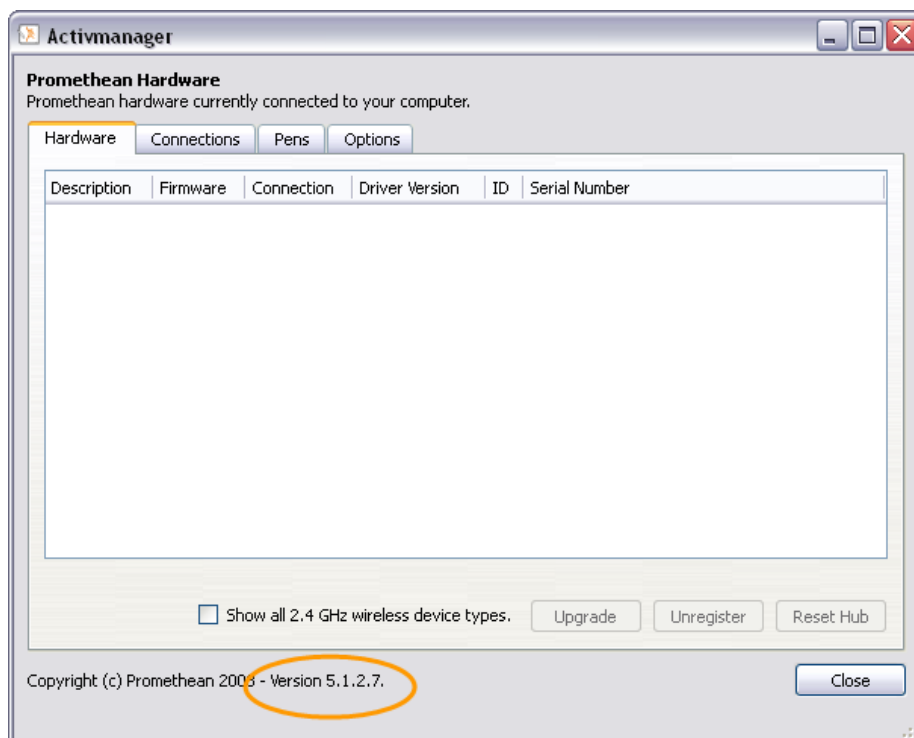
In the example on the right, the ActivHub version is out of date and needs to be upgraded.

|  ActivHub firmware version | | Do I need to re-register ActivExpression devices after the upgrade? |
|--|----------------|---|
| | 5.08 or lower | Yes. Upgrading the ActivDriver will reset the ActivHub. After completing the upgrade, you need to re-register your ActivExpression devices. For details, see Registering devices. |
| | 5.09 or higher |  No. Upgrading the ActivDriver will <i>not</i> reset the ActivHub. However, we recommend that you reset the ActivHub yourself, and re-register your ActivExpression devices. |

Stage 1 - Upgrade the ActivDriver


Firstly, you will need to be using ActivManager (Driver) version 5.1.27 or above. To obtain the latest driver, go to www.prometheanplaet.com, sign in, and click on the 'Support' -> 'Software' -> 'ActivDrivers' and download the latest version of the driver for your operating system. Once downloaded, install the file by double clicking on the file you have downloaded, and following the onscreen instructions.

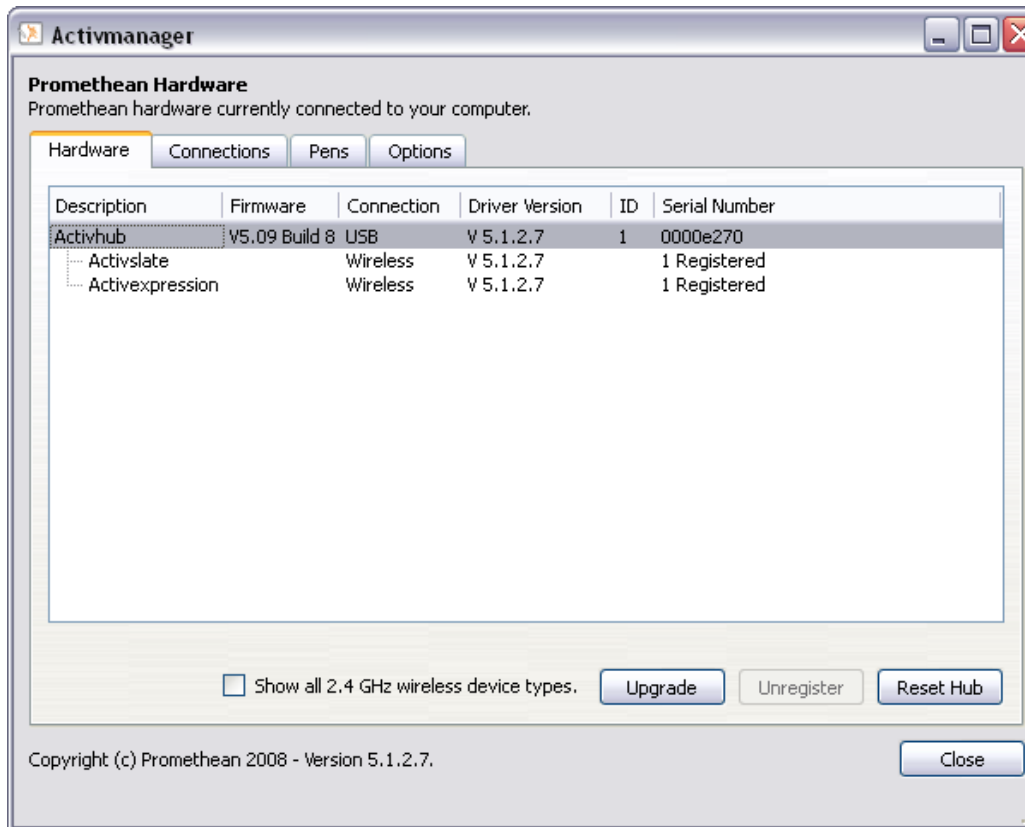
Once the installation has completed, you can check to see if the driver has been successfully updated by clicking on the ActivManager icon in the system tray or toolbar, and selecting 'Control Panel' from the list. The driver version will be displayed as illustrated below:



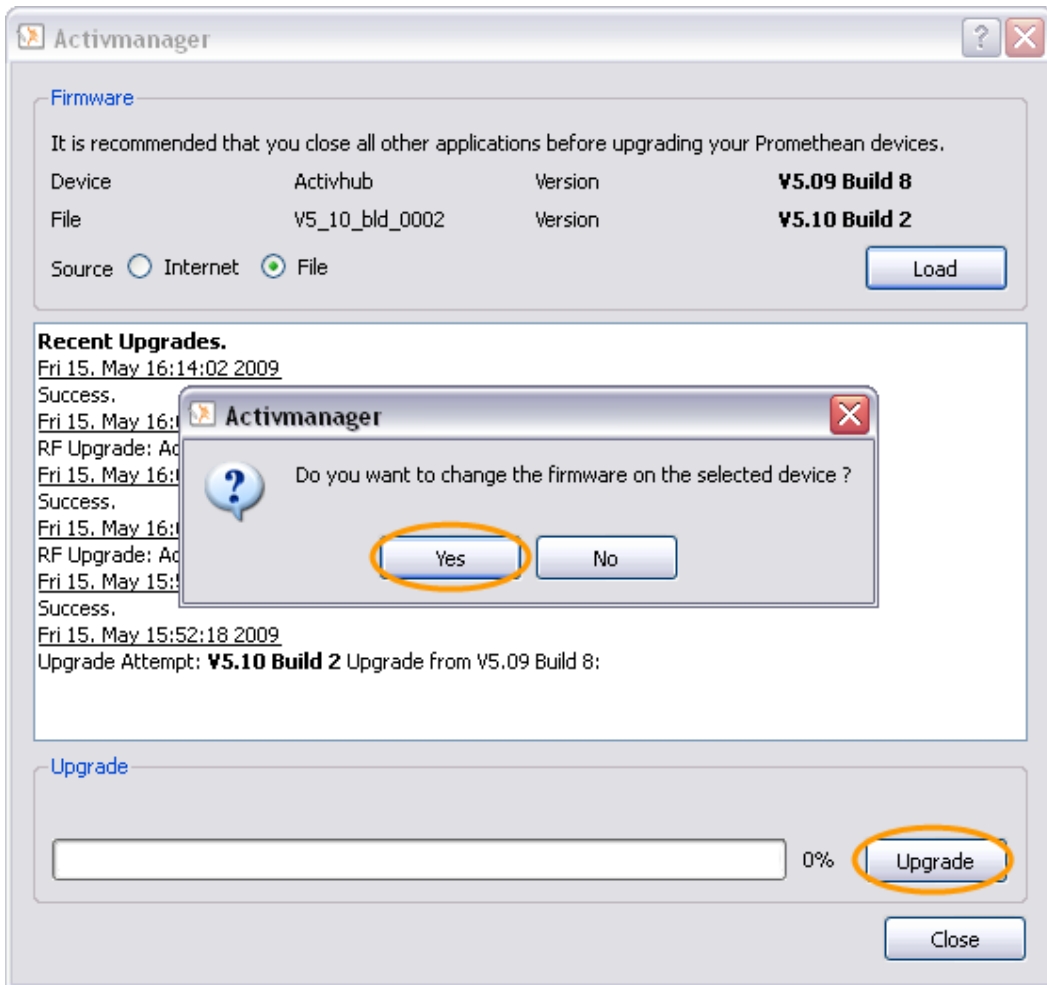
Stage 2 - Upgrade the ActivHub

Complete these steps *after* you have successfully completed Stage 1 - Upgrade the ActivDriver.

1. Plug the ActivHub into a USB port on your computer. Check that it is working correctly - its green light should be flashing.
2. Right-click the **ActivManager**  icon in the bottom right-hand corner of the screen.
3. Select **Control Panel**. ActivManager opens. Then select the 'Hardware' Tab.



4. Select **ActivHub** and then click **Upgrade**. The 'Firmware' dialog opens.
5. In this dialog, select '**Internet**' as the source, then click **Load**. The driver will then check to see if you have the latest version of firmware on your hub, and prompt you to upgrade (if not using 5.10 or above)
6. Then click **Upgrade**. A confirmation dialog opens.
7. Click **Yes**.



9. On successful completion, a confirmation dialog opens. Click **OK**, then click **Close**.



Don't close ActivManager, you need it in Stage 3.

Activmanager

Firmware

It is recommended that you close all other applications before upgrading your Promethean devices.

| | | | |
|--------|----------------|---------|----------------------|
| Device | Activhub | Version | V5.09 Build 8 |
| File | V5_10_bld_0002 | Version | V5.10 Build 2 |

Source Internet File Load

Recent Upgrades.

Thu 28. May 11:02:21 2009
Upgrade Attempt: **V5.10 Build**

Fri 15. May 16:14:02 2009
Success.

Fri 15. May 16:08:09 2009
RF Upgrade: ActivExpression

Fri 15. May 16:06:11 2009
Success.


Fri 15. May 16:00:11 2009
RF Upgrade: ActivExpression

Fri 15. May 15:52:45 2009
Success.

Fri 15. May 15:52:18 2009
Upgrade Attempt: **V5.10 Build 2** Upgrade from V5.09 Build 8:


Upgrade

Restarting, please wait...

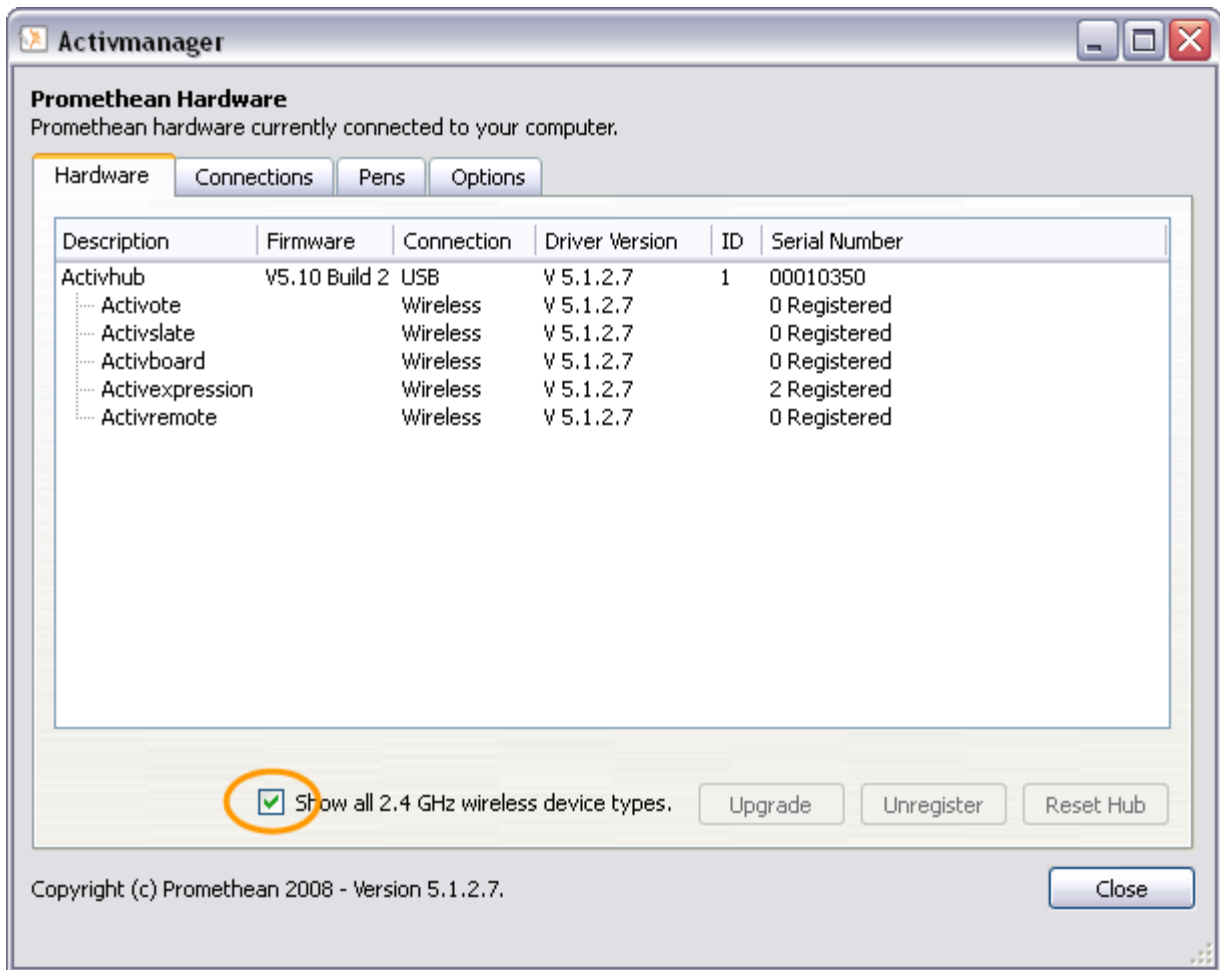
 100% Upgrade

Close

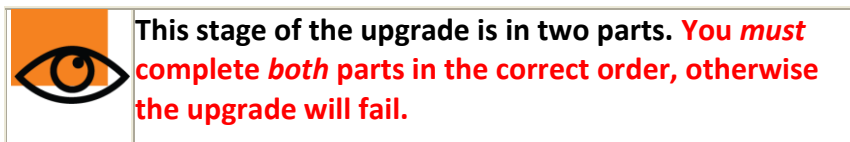
Activmanager

 The upgrade was successful.

OK



Stage 3 - Upgrade the ActivExpression devices



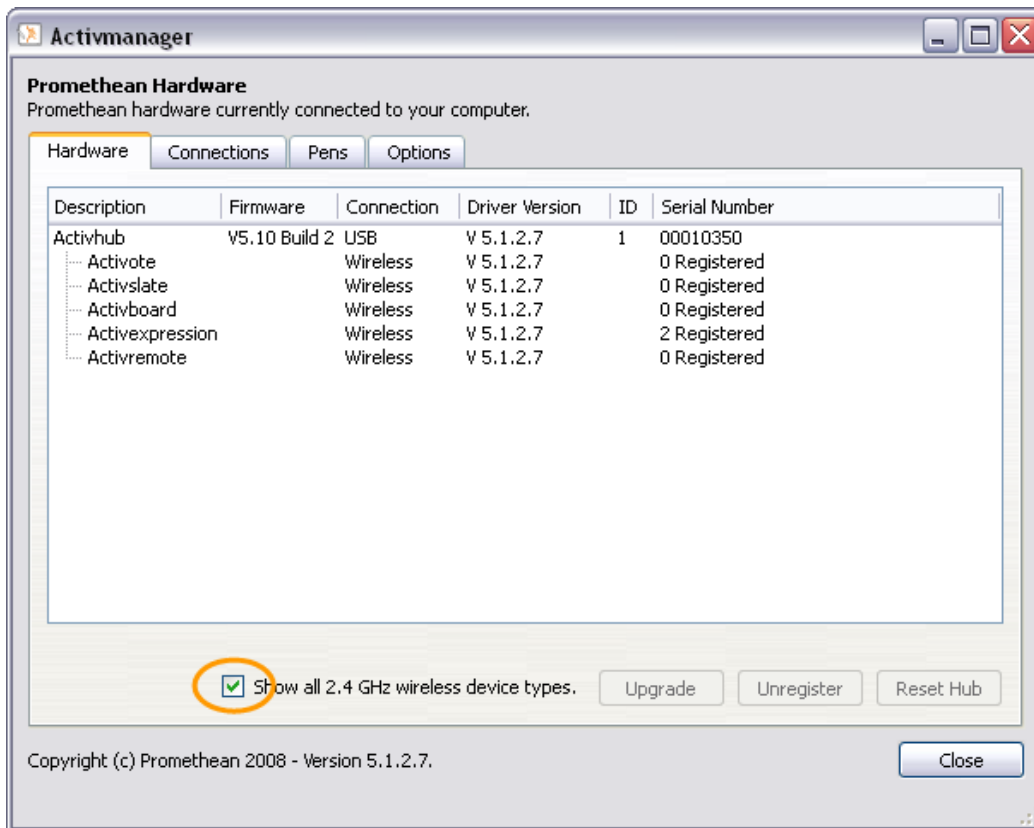
Complete these steps *after* you have successfully completed Stage 2 - Upgrade the ActivHub.

You will require two files for this part of the upgrade. The files have been zipped up, and are available to download [here](#)

Once downloaded, extract the contents to your desktop.

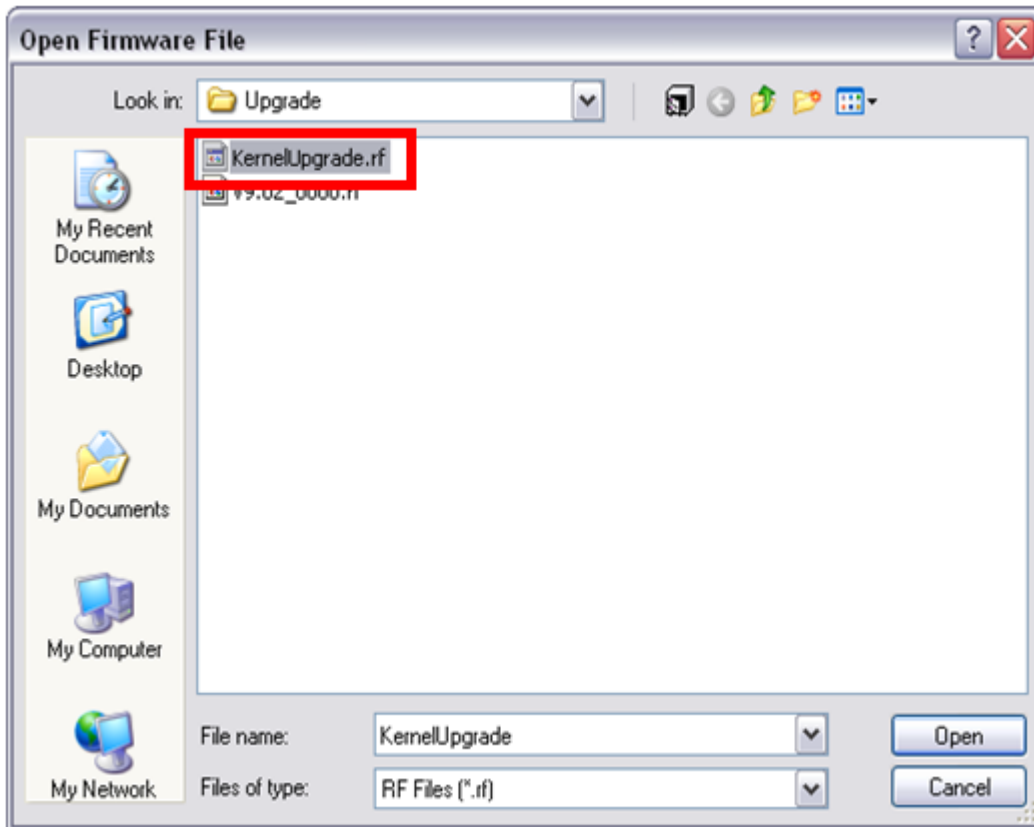
Part 1

- In the 'Hardware' Tab in ActivManager, ensure that the check box 'Show all 2.4GHz wireless device types' is selected. A dialog opens showing all devices registered on this ActivHub.

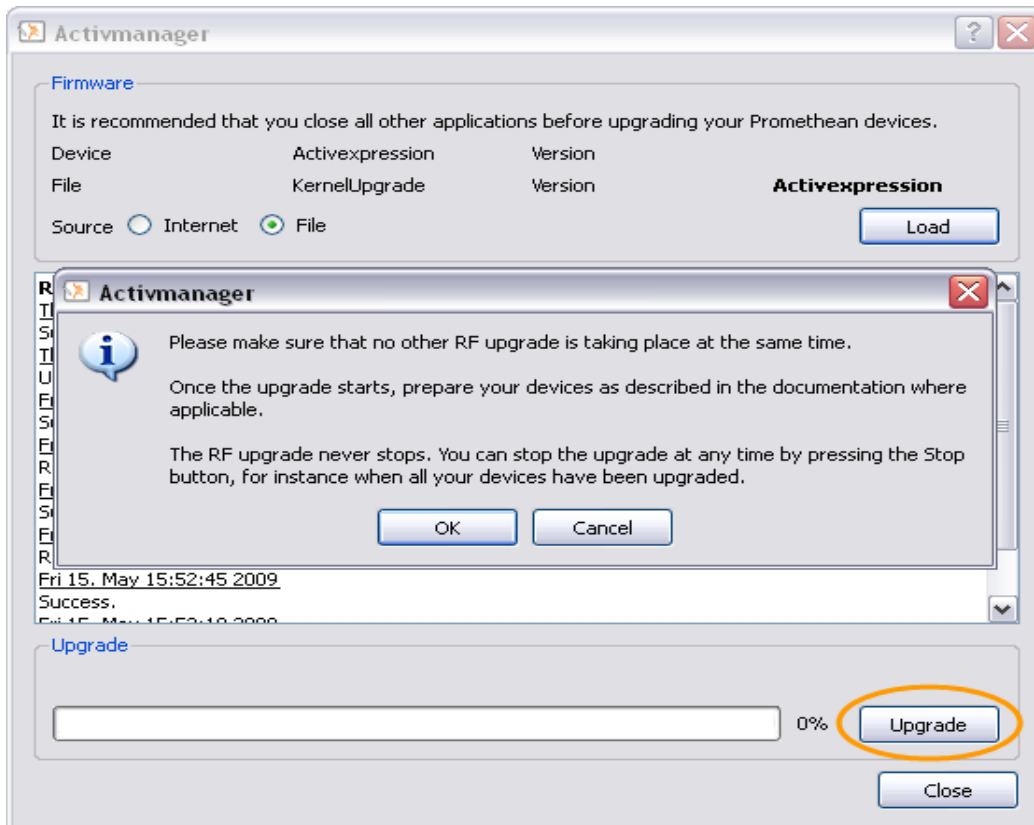



- Select **ActivExpression** and then click **Upgrade**. The 'Firmware' dialog opens.
- In this dialog, select **File** as the source, then click **Load**. The 'Open Firmware File' dialog opens.
- Browse to and select the file '**KernelUpgrder_V1_to_V2.rf**' from the folder where we extracted the zip file to earlier, then click **Open**. The 'Firmware' dialog opens.

*******NB You must Upgrade the KernelUpgrader_v1_to_v2.rf first – If you do not, and upgrade the v9.02_0000 first, before the KernelUpgrader, it is highly likely your Expression Device will fail*******



- Click **Upgrade**. A confirmation dialog opens.



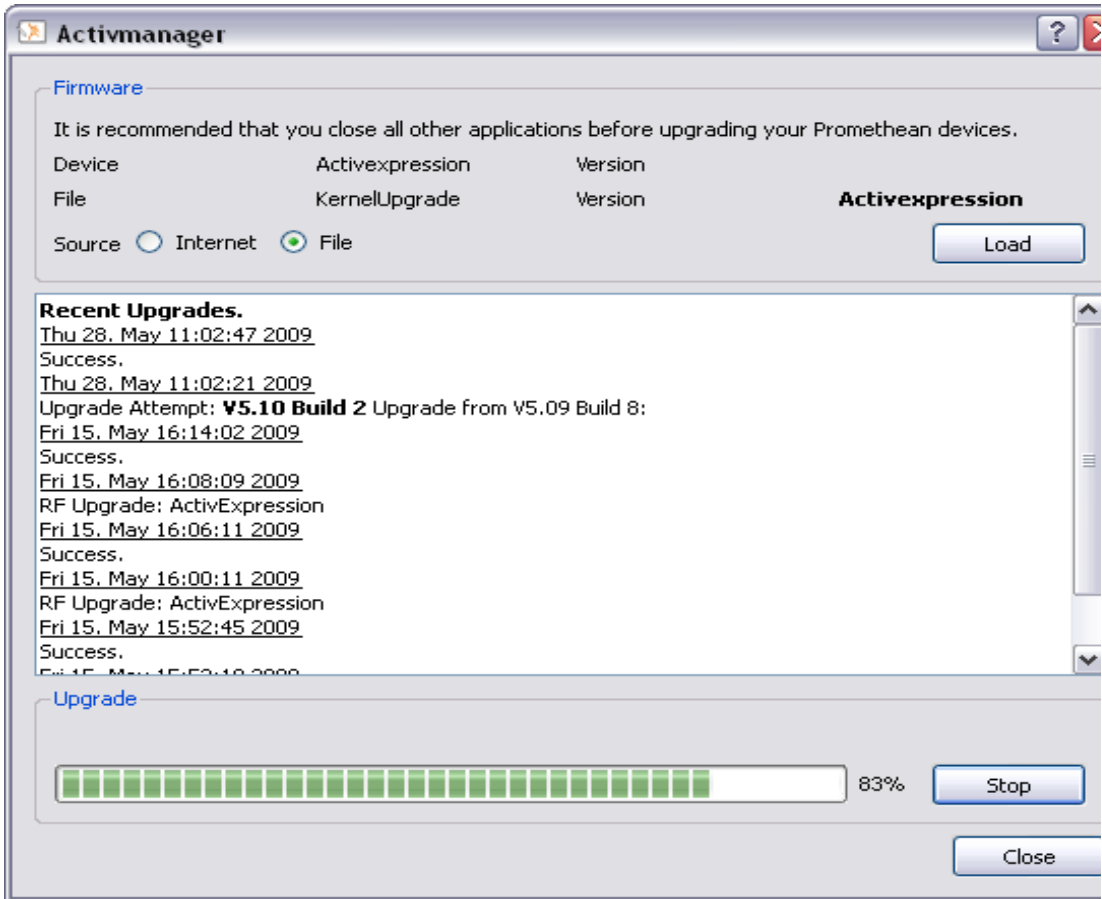



- Check that no other firmware upgrade is currently in progress and within transmission range:
 - Power on one of the ActivExpression devices.
 - Press the **MENU SYM** key. If another firmware upgrade is in progress, the **RF Upgrade** multifunction key on your device is active. In this case, do **not** begin the upgrade.
 - Wait a few minutes, then press the **MENU SYM** key again. If the **RF Upgrade** multifunction key on the device is no longer active, go to Step 7, otherwise repeat this step.

- When you are ready to begin, click **OK**. The kernel upgrade begins to run on your computer.



- Now power on all ActivExpression devices:
 - On each device, press the **MENU SYM** key, then press the **RF Upgrade** multifunction key. A confirmation dialog opens.
 - Press the **ENTER** key. The devices display the message 'Searching for RF update. This may take a few minutes.'
 - When the upgrade is complete, the devices automatically power off.



| | | | |
|---|---|---|---|
|  | <ul style="list-style-type: none"> Power on each device and check that the upgrade was successful: | | |
| | Upgrade from | ActivExpression Screen | Status |
| ✓ | Any version | Shows blank progress bar when powered on. | Upgrade successful. |
| | Version 1 | Shows vertical lines. | Upgrade incomplete. |
| | Version 0 | Appears not to power on. | Leave the upgrade running on your computer. Wait for a few minutes, then try to power the device on again. Repeat until all devices have been upgraded. |

10. When all devices have been upgraded, click **Stop** on your computer.

Part 2

- In the 'Hardware' Tab in ActivManager, ensure that the check box 'Show all 2.4GHz wireless device types' is selected.
- Select **ActivExpression** and then click **Upgrade**. The 'Firmware' dialog opens.
- In this dialog, select **File** as the source, then click **Load**. The 'Open Firmware File' dialog opens.
- Browse to and select the downloaded file '**V9.02_0000.rf.**'

Then click **Open**. The 'Firmware' dialog opens.

- Click **Upgrade**. A confirmation dialog opens.
- Check that no other firmware upgrade is in progress and within transmission range** (see Step 7. in **Part 1** above).
- When you are ready to begin, click **OK**. The Firmware upgrade begins to run on your computer.
- Now power on all ActivExpression devices:
 - Press the **ENTER** key. The device screens display a blank progress bar.
 - When the progress bar in the ActivManager window reaches 100%, the progress bar on the devices is updated.
 - When the upgrade is complete, the devices **automatically power off**.
- To check that the upgrade was successful, power on each device:

- After the Promethean logo appears on the screen, the version number is briefly displayed in the bottom right-hand corner. This should read V9.02 B0002 or higher.
- You can also check the version number by pressing the **MENU SYM** key, then pressing the **Diagnostics** multifunction key. The version number appears on the second line of diagnostic information.
- If a device screen shows the progress bar, the upgrade is incomplete. Wait for a few minutes, then check again.

10. When all devices have been upgraded, click **Stop** on your computer.

